

OUTBOARD PROFILE & SAIL PLAN

45' AUXILIARY SLOOP "ELEDA"

FOR
ROSS GANNON
WEST TISBURY MA.
DESIGNED BY
ANTONIO SALGUERO
CASTINE ME.

SCALE: $\frac{3}{8}'' = 1.0'$ MARCH 25, 1992

SHEET NO. 1

INITIAL ISSUE	3-25-91	ACS
NO.	DESCRIPTION	DATE BY
REVISIONS		

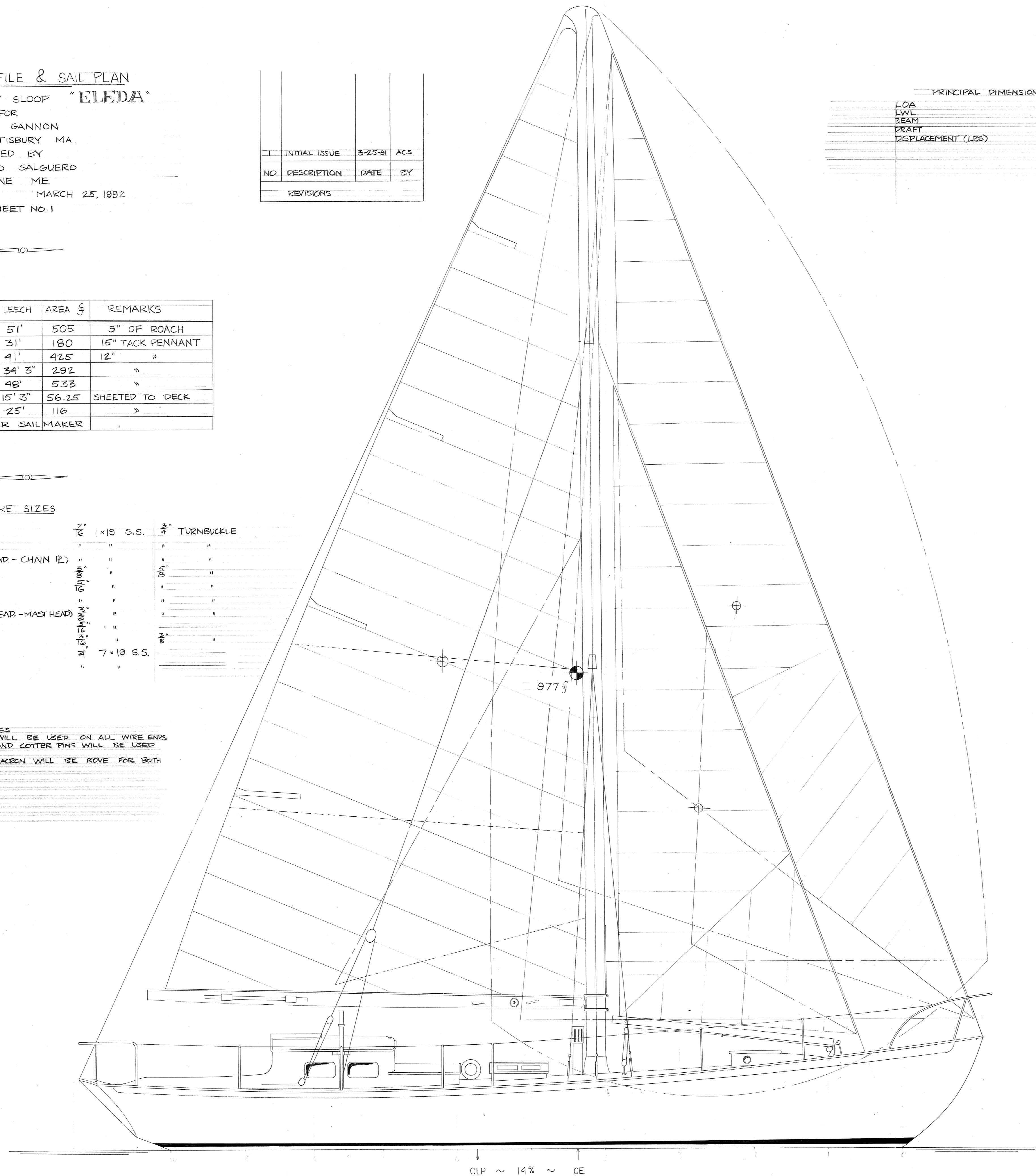
PRINCIPAL DIMENSIONS	
LCA	44' 4"
LWL	36' 6"
BEAM	12' 6"
DRAFT	6'
DISPLACEMENT (LBS)	35,582

SAIL	LUFF	FOOT	LEECH	AREA $\frac{1}{2}$	REMARKS
MAIN	47' 3"	20' 5"	51'	505	9" OF ROACH
STAYSAIL	34'	11' 9"	31'	180	15" TACK PENNANT
NO. 1 YANKEE	50' 9"	21' 6"	41'	425	12" "
NO. 2 YANKEE	"	21' 9"	34' 3"	292	"
GENOA	"	22' 3"	48'	533	"
STORM JIB	21'	9' 3"	15' 3"	56.25	SHEETED TO DECK
ST. TRYSAIL	18' 9"	10' 9"	25'	116	"
SPINNAKER	AS PER SAILMAKER				

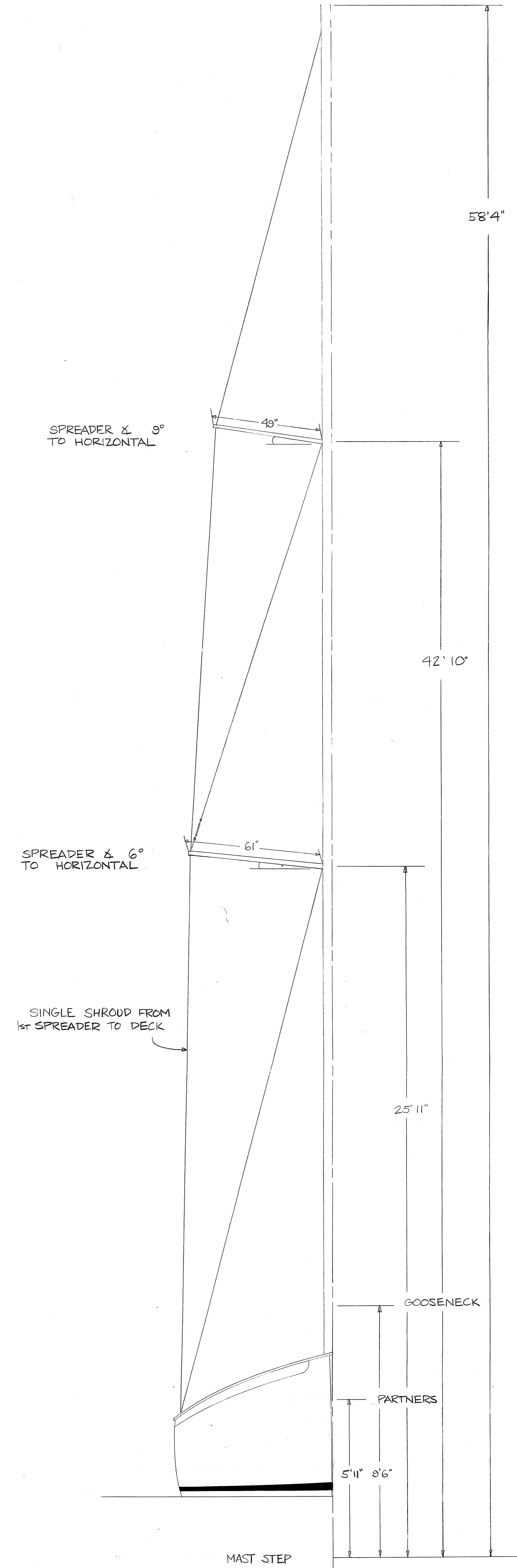
WIRE SIZES

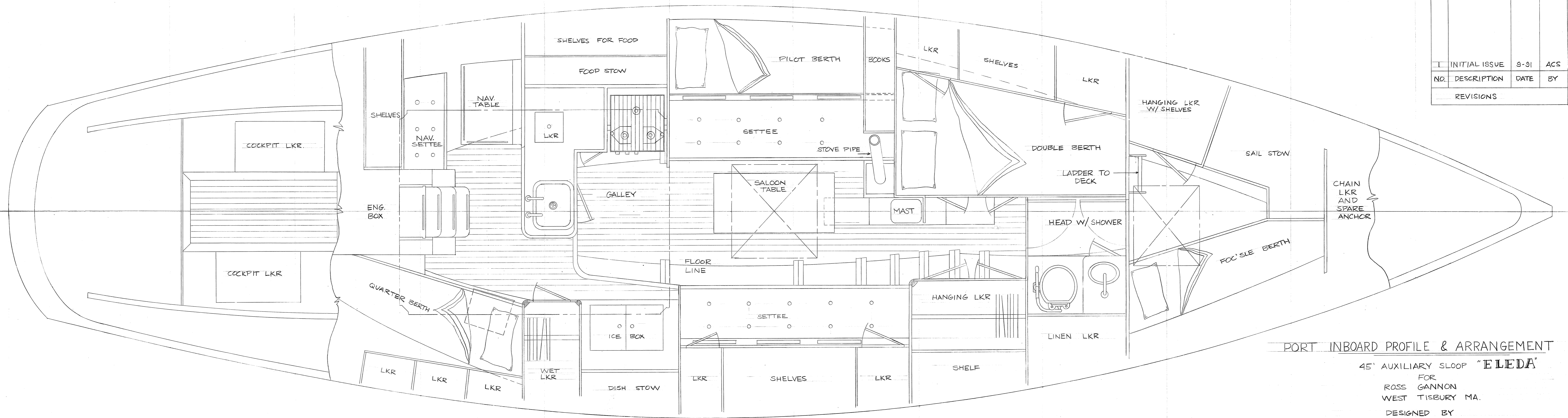
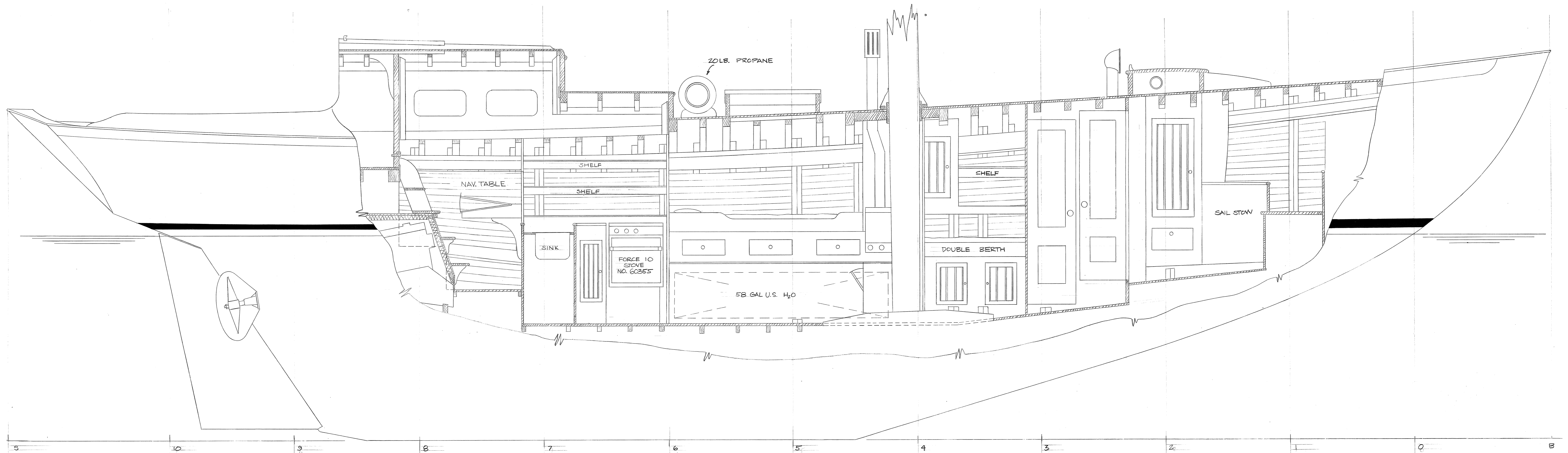
HEADSTAY	1/2" 1x19 S.S.	3/4" TURNBUCKLE
BACKSTAY	"	"
UPPER SHROUD (1st SPREAD - CHAIN P.)	"	"
FORESTAY	"	"
INTERMEDIATE SHROUD	"	"
LOWER SHROUDS	"	"
UPPER SHROUD (1st SPREAD - MASTHEAD)	"	"
RUNNING BACKSTAYS	"	"
LIFELINES	"	"
TOPPING LIFT	7x19 S.S.	"
BACKSTAY RUNNERS	"	"

- GENERAL NOTES
1. McWHYTE SWAGE FITTINGS WILL BE USED ON ALL WIRE ENDS
 2. STAINLESS STEEL CLEVIS PINS AND COTTER PINS WILL BE USED THROUGHOUT
 3. SLAB REEFING LINES - 3/4" SPUN DACRON WILL BE ROVE FOR BOTH REEPS



CLP ~ 14% ~ CE

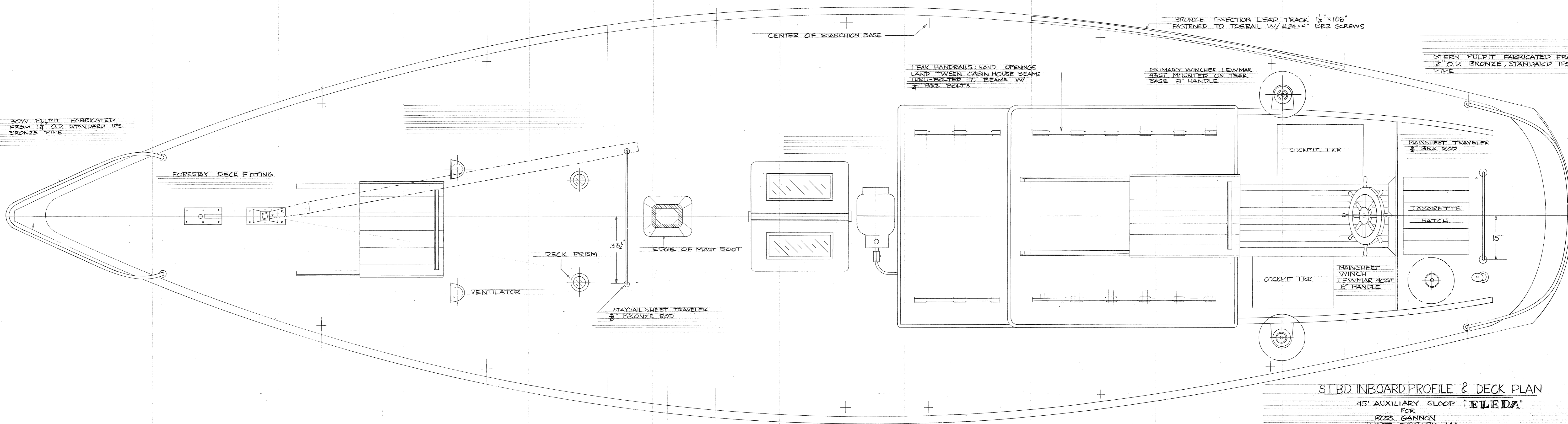
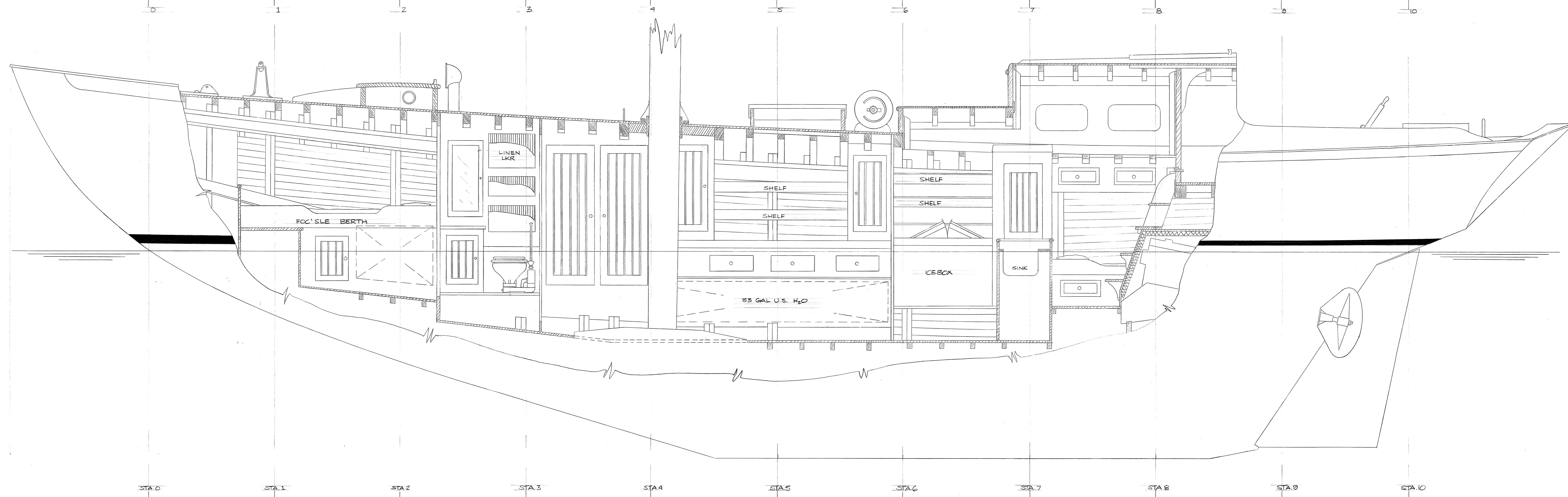




NO.	DESCRIPTION	DATE	BY

PORT INBOARD PROFILE & ARRANGEMENT

45' AUXILIARY SLOOP "ELED A"
 FOR
 ROSS GANNON
 WEST TISBURY MA.
 DESIGNED BY
 ANTONIO SALGUERO
 CASTINE ME.
 SCALE: $\frac{3}{4}'' = 1.0'$ MARCH 25, 1992
 SHEET NO. 3



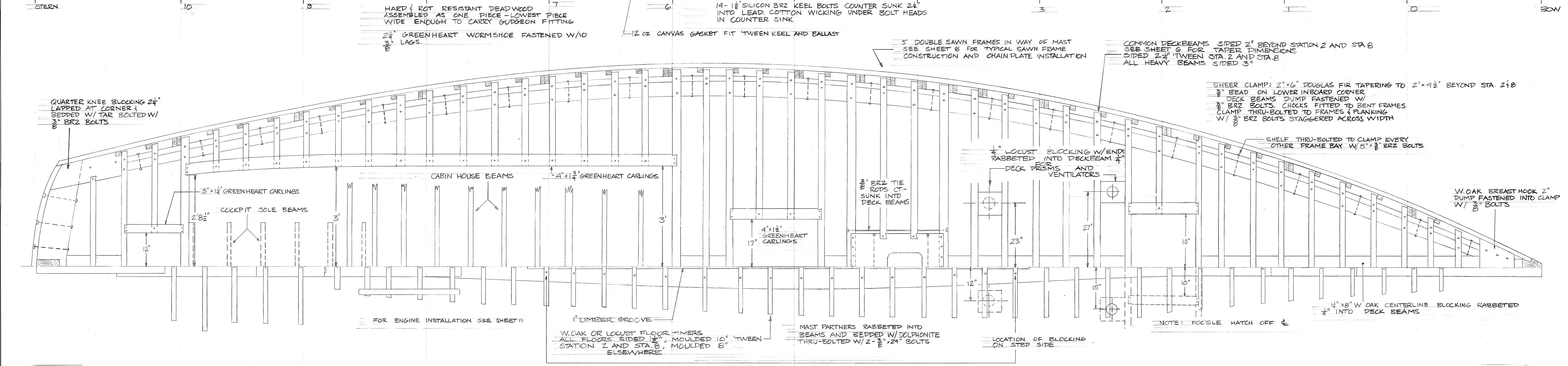
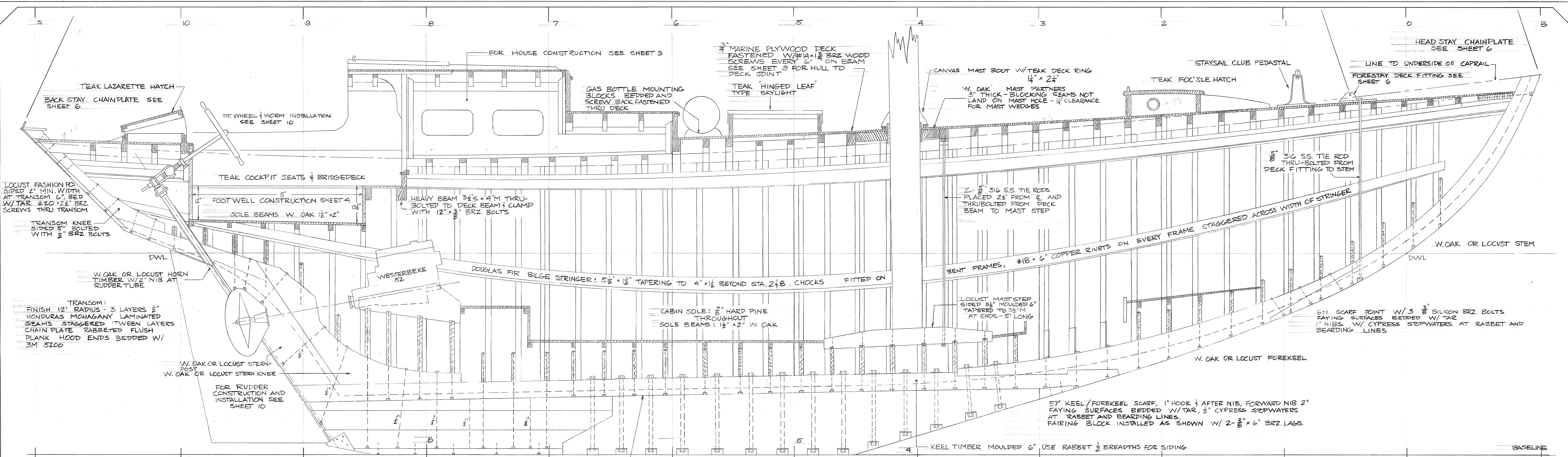
STBD INBOARD PROFILE & DECK PLAN

45' AUXILIARY SLOOP "ELEDA"
 FOR
 ROSS GANNON
 WEST TISBURY MA
 DESIGNED BY ANTONIO SALGUERO
 CASTINE ME

SCALE: $\frac{3}{8}'' = 1.0'$ APRIL 11, 1992

SHEET NO. 4

NO	DESCRIPTION	DATE	BY
1	INITIAL ISSUE	9-11-92	ACS
REVISIONS			

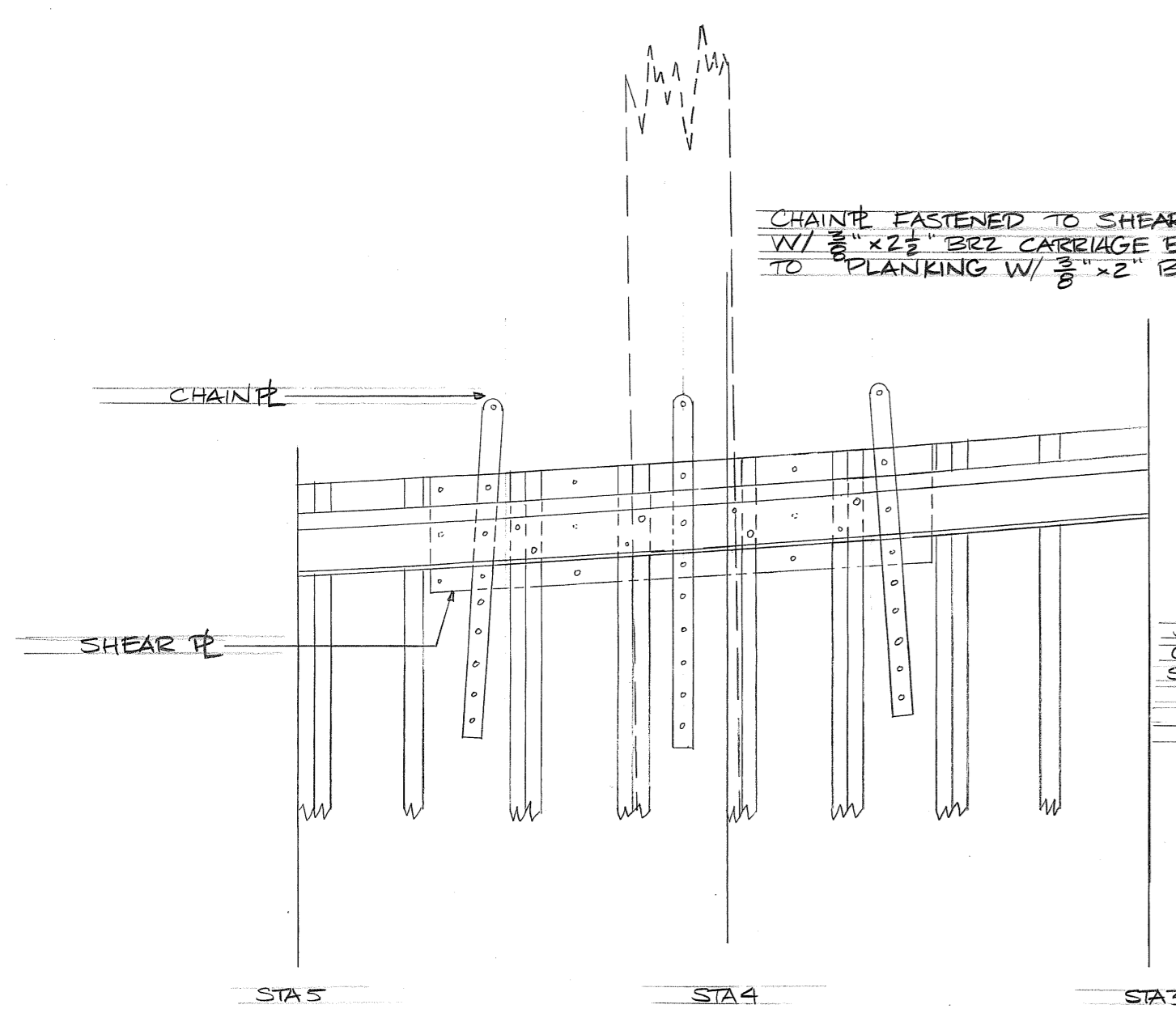


- GENERAL NOTES:
1. DOUBLE SAWN FRAMES ON EVERY STATION
 2. FRAME, FLOOR AND DECK BEAM SPACING 11" ON CENTER
 3. AT STATION 5.5 FORWARD FLOOR TIMBERS ARE FORWARD OF FRAMES AND DECK BEAMS AFT. VICE-VERSA AFT OF STATION 5.5
 4. SCARFS IN SHELF CLAMP AND BILGE STRINGER WILL BE CUT AS PROPER GLUE JOINTS WITH FAYING SURFACES ACROSS THE WIDEST FACE OF TIMBER EXPOSING THE GREATEST GLUING SURFACE. SCARFS WILL BE STAGGERED ACROSS THE VESSEL DIFFERING FROM PORT TO STEPS AS WELL AS BEING STAGGERED ON SAME SIDE, I.E. STEP SCARFS IN CLAMP, SHELF AND BILGE STRINGER WILL NOT GO IN LINE.
 5. ALL HALF-BEAMS TO CARLINGS WILL HALF-LAP UNDER CARLING AND BE THROUGH BOLTED
 6. ALL FAYING SURFACES IN BACKBONE WILL BE BEDDED W/ TAR AS WELL AS ALL CARLING JOINTS IN DECK BEAMS
 7. ALL EXPOSED END GRAIN - FRAME AND BEAM ENDS, FLOOR TIMBERS ETC. WILL BE SEALED WITH RED LEAD OR EQUIVALENT PAINT.
 8. SEE SHEET 8 FOR FURTHER HULL CONST. DETAILS
 9. BUTT BLOCKS CUT W/ 1/2" OVERLAP ON ADJACENT PLANKS FASTENED W/ 10 #16 x 2 1/2" BRZ SCREWS

NO	DESCRIPTION	DATE	BY

CONSTRUCTION PLAN
 45' AUXILIARY SLOOP "ELEDIA"
 FOR
 ROSS GANNON
 WEST TISBURY MA
 DESIGNED BY
 ANTONIO SALGUERO
 CASTINE ME
 SCALE: 3/4" = 1.0' MARCH 27, 1992
 SHEET NO. 5.

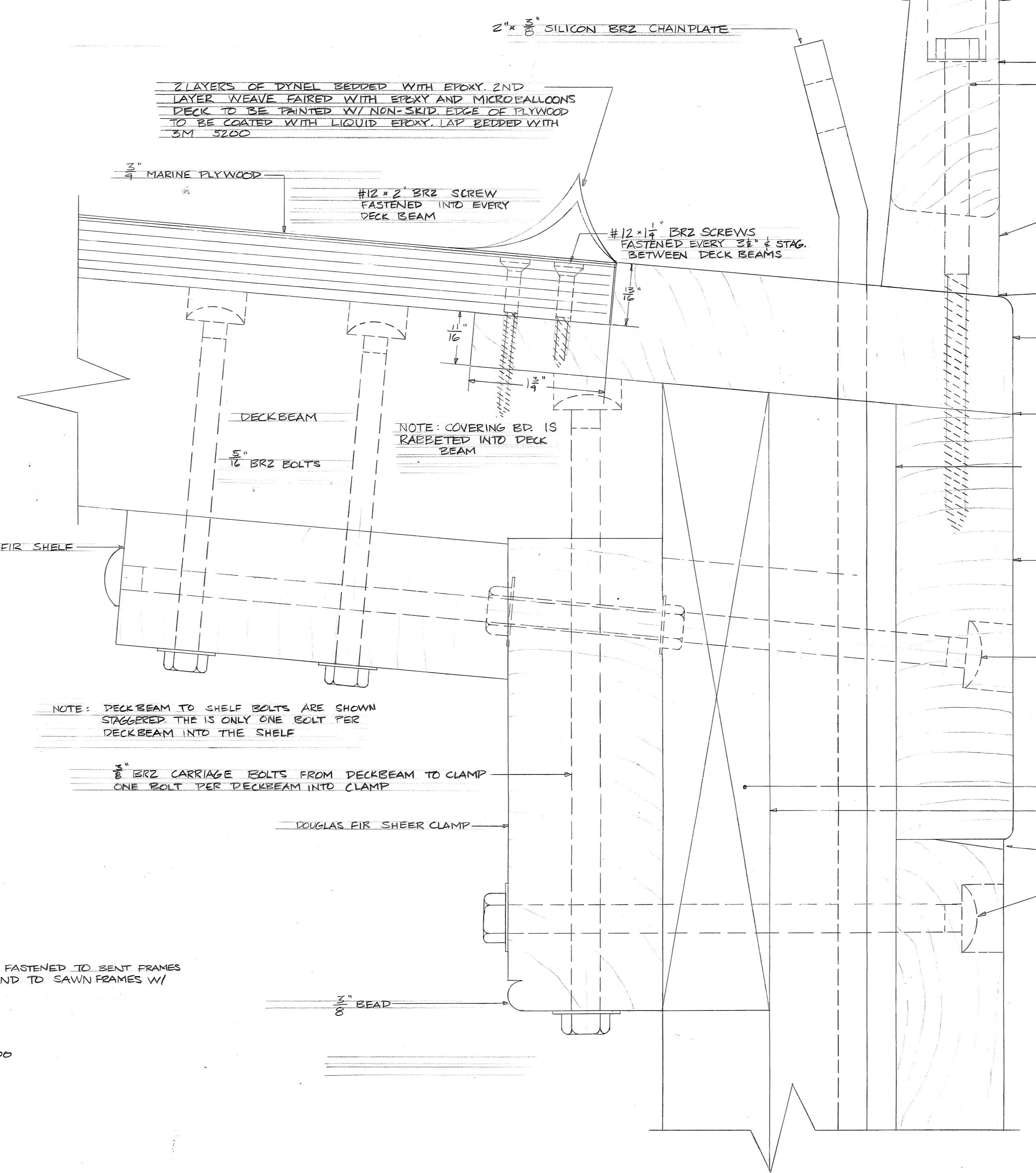
CHAIN PLATE FASTENED TO SHEAR PLATE AND HULL PLANKING
W/ 3/8" x 2 1/2" BRZ CARRIAGE BOLTS. FASTENED
TO PLANKING W/ 3/8" x 2" BRZ CARRIAGE BOLTS



CHAIN PLATE INSTALLATION PROFILE SCALE: 3/8" = 1.0'

SHEAR PLATE FASTENED TO PLANKING W/ 3/8" x 2" BRZ
CARRIAGE BOLTS, DOUBLE BOLTS THRU
SHEAR CLAMP AND FRAME

2 LAYERS OF DYNEL BEDDED WITH EPOXY. 2ND
LAYER WEAVE FAIRER WITH EPOXY AND MICROBALLONS
DECK TO BE PAINTED W/ NON-SKID EDGE OF PLYWOOD
TO BE COATED WITH LIQUID EPOXY. LAP BEDDED WITH
3M 5200



2" x 3/8" SILICON BRZ CHAIN PLATE

3/8" MARINE PLYWOOD

#12 x 2" BRZ SCREW
FASTENED INTO EVERY
DECK BEAM

#12 x 1 1/4" BRZ SCREWS
FASTENED EVERY 3" & STAG.
BETWEEN DECK BEAMS

DECK BEAM

5/16" BRZ BOLTS

NOTE: COVERING BR IS
RABBETED INTO DECK
BEAM

DOUGLAS FIR SHELF

NOTE: DECK BEAM TO SHELF BOLTS ARE SHOWN
STAGGERED THERE IS ONLY ONE BOLT PER
DECK BEAM INTO THE SHELF

3/8" BRZ CARRIAGE BOLTS FROM DECK BEAM TO CLAMP
ONE BOLT PER DECK BEAM INTO CLAMP

DOUGLAS FIR SHEER CLAMP

3/8" BEAD

TEAK CAPRAIL: 2" x 1" ELLIPTICAL IN SECTION, RABBETED 1/4"
OVER BULWARK, FASTENED W/ 1/2" x #14 BRZ
SCREWS, BEPDED W/ POLPHONITE

TEAK BULWARK: 1 1/2" AT BASE TAPERED TO 1 1/8" AT TOP
6" x 5/16" BRZ LAG COUNTER SUNK TO POSITION
THREADS AT TOP OF COVERING BOARD

SCUPPERS: 1" x 3" ROUNDED AND CHAMFERED. 4 SCUPPERS CUT AT
LOWEST POINT OF SHEER AND NOT AT CHAINPLATES

BED BULWARK W/ 3M 5200

TEAK COVERING BOARD: 1 1/2" x 7" RABBETED TO ACCEPT PLYWOOD PECKING

BED TOP EDGE OF SHEER STRAKE WITH 3M 5200

BRZ SHEAR PLATE: 3/8" x 12" x 52" RABBETED INTO FRAMES THRU-BOLTED W/ 3/8"
BRZ CARRIAGE BOLTS AT EACH FRAME

TEAK SHEER STRAKE: 1 1/2" x 5 1/2" MIDSHIPS TAPERING TO ENDS OF VESSEL

3/8" BRZ CARRIAGE BOLT

NOTE: SHEER CLAMP TO FRAME THRU-BOLTS ARE SHOWN STAGGERED
THERE IS ONLY ONE BOLT PER FRAME. THE UPPER BOLT IS
POSITIONED UNDER THE SHELF. THE LOWER BOLT IS BORED THRU
THE TOP OF THE SECOND STRAKE. PLANKING SCREWS THAT MAY
INTERFERE W/ THESE BOLTS WILL BE OMITTED

CHOCK BETWEEN CLAMP AND BENT FRAME USE W. OAK OR LOCUST

INGOARD FACE OF BENT FRAME

CAULKING SEAM

3/8" BRZ CARRIAGE BOLT

DOUBLE SAWN FRAMES: FUTTOCKS SIDED 1 1/2" MOULDED 3"
FUTTOCKS ARE CUT SO BUTTS ARE NO CLOSER THAN 18"
BUTTS ARE TIGHT FIT W/ END GRAIN SEALED W/ RED LEAD
FUTTOCKS DRIFTED TOGETHER W/ 3/8" BRZ DRIFTS. 3 DRIFTS BETWEEN
BUTTS
5" SAWN FRAMES IN WAY OF MAST: THRU-BOLTED W/ 3/8" BRZ
BOLTS INSTEAD OF DRIFTS

FLOOR TIMBER TO FRAME CONNECTION: 4 - 5/8" BRZ BOLTS
BETWEEN STA 2 AND STA 8. 3 - 5/8" BRZ BOLTS BEYOND STA 2
AND STA 8

1 1/2" LIMBER GROOVE CUT BETWEEN
STA. 3 AND STA. 7. 3/8" BRZ CHAIN
INSTALLED ON 1

BALLAST KEEL

RABBET BELOW DWL BEDDED WITH TAR
RABBET ABOVE DWL BEDDED WITH 3M 5200

1 1/2" DOUGLAS FIR HULL PLANKING FASTENED TO BENT FRAMES
W/ 1/4" COPPER RIVETS AND TO SAWN FRAMES W/
2" x #18 BRZ SCREWS

HULL TO DECK CONNECTION FULL SCALE

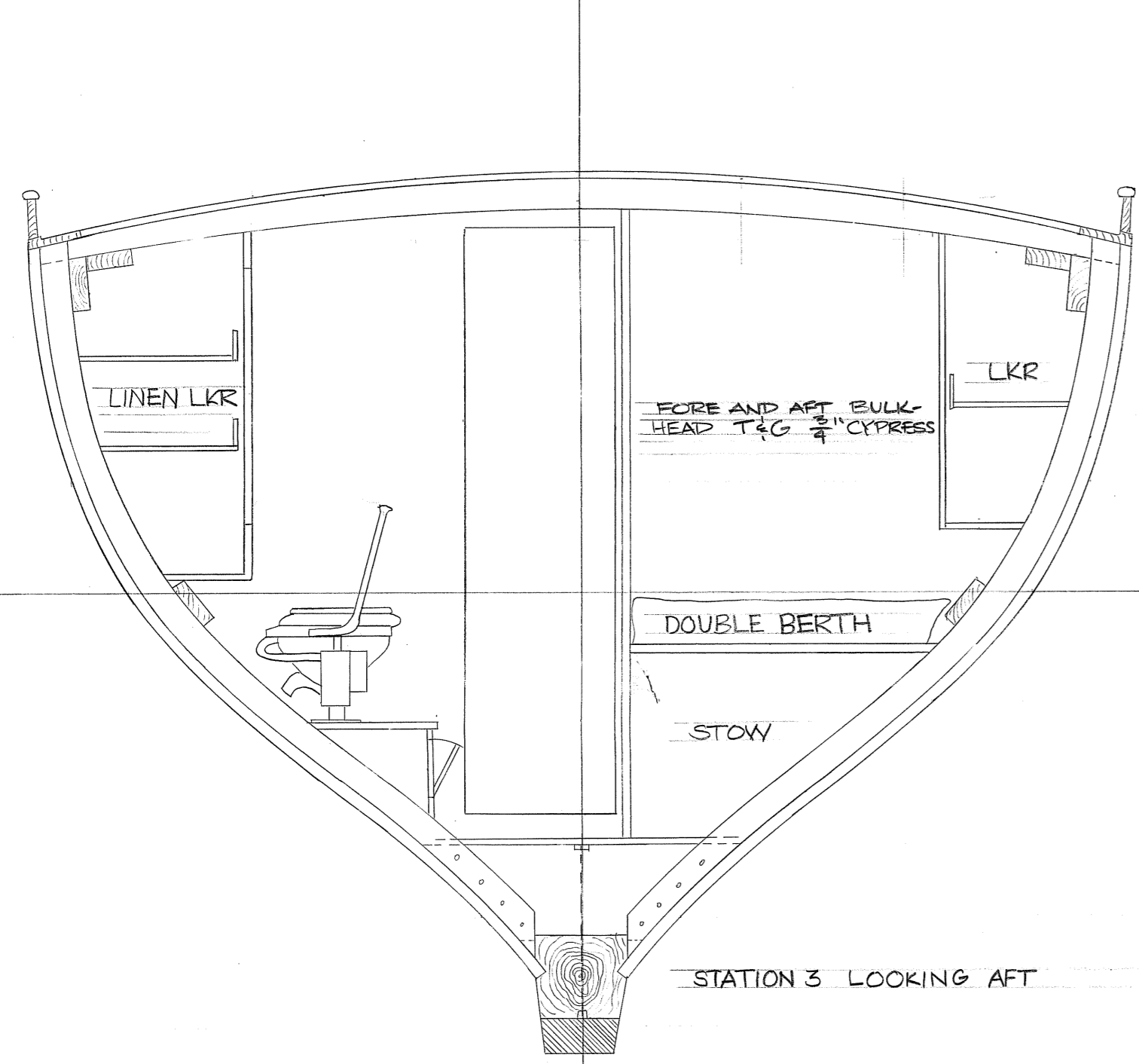
NO	DESCRIPTION	DATE	BY
I	INITIAL ISSUE	3-31-81	ACS
REVISIONS			

HULL CONSTRUCTION DETAILS

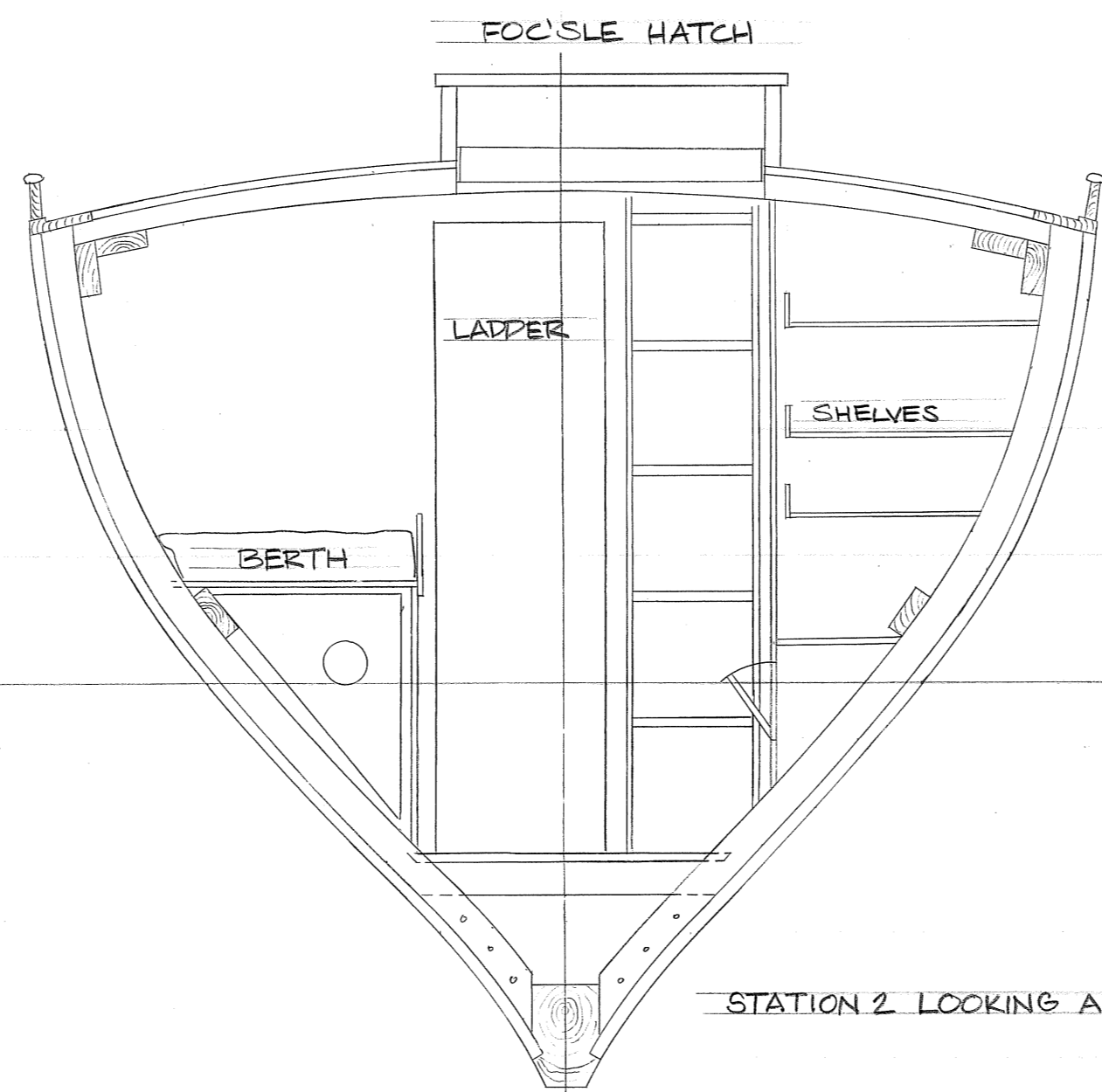
45' AUXILIARY SLOOP "ELENA"
FOR
ROSS GANNON
WEST TISBURY MA
DESIGNED BY
ANTONIO SALGUERO
CASTINE ME

SCALE: AS NOTED MARCH 31, 1981

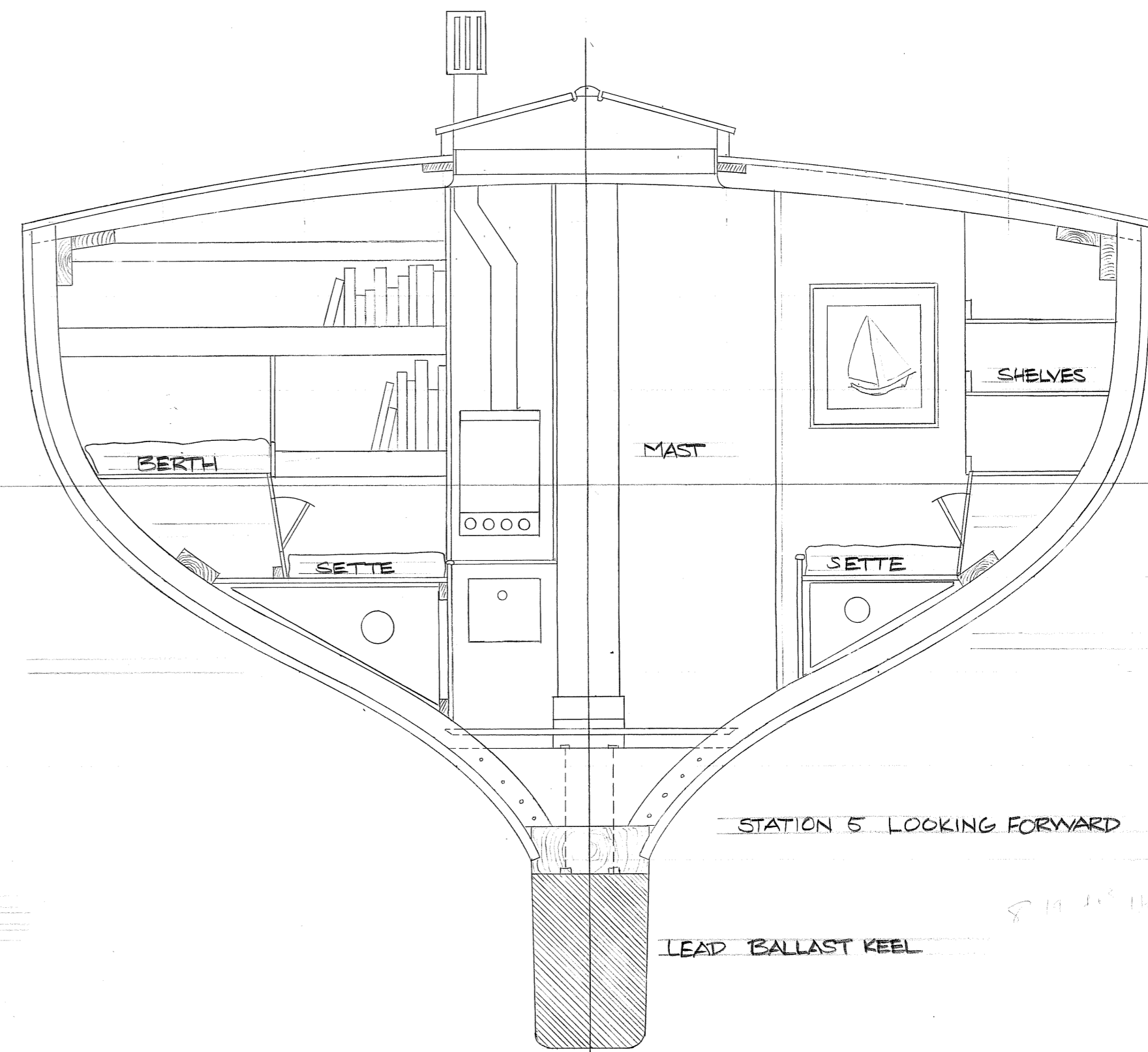
SHEET NO. 9



STATION 3 LOOKING AFT

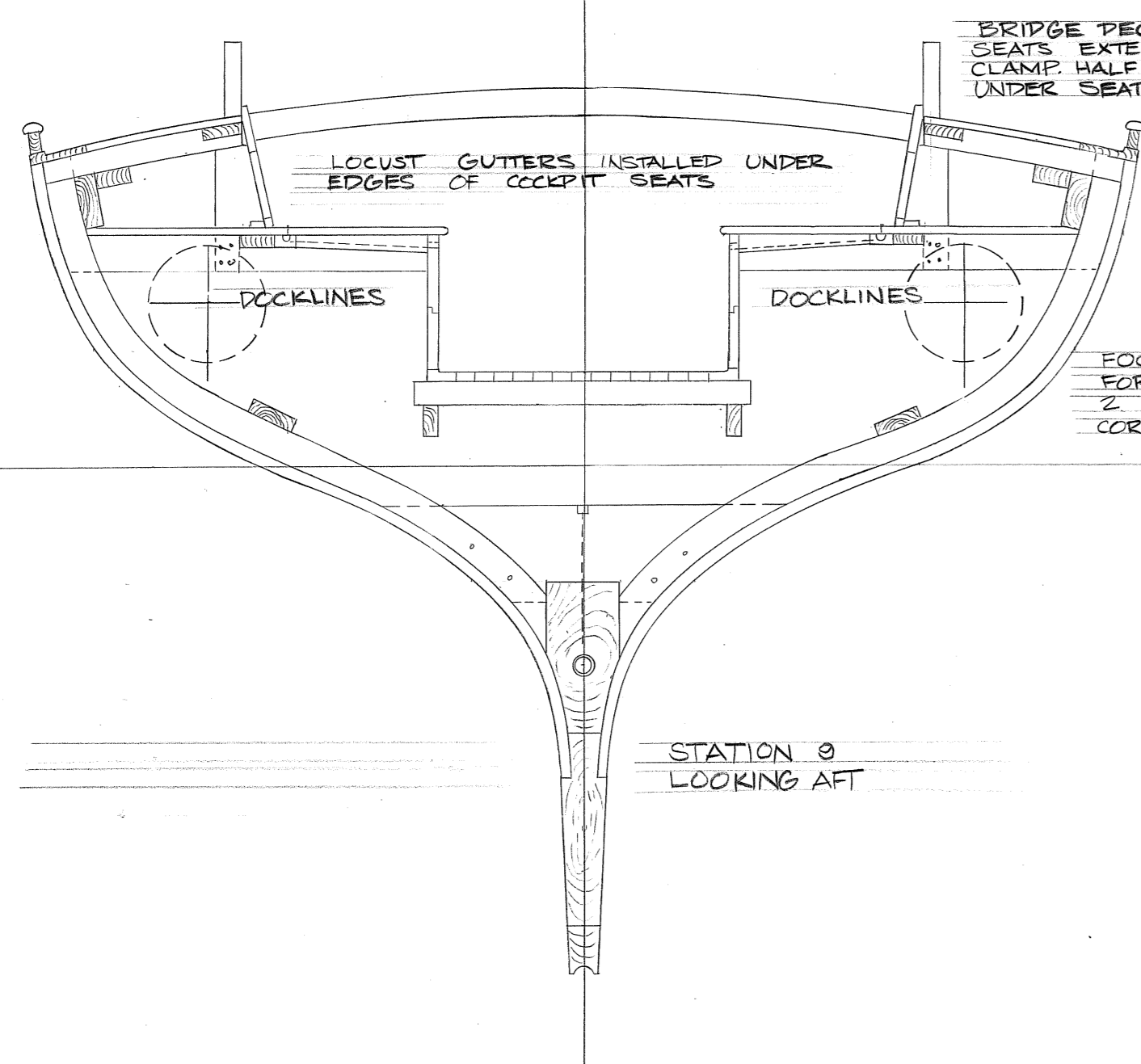


STATION 2 LOOKING AFT

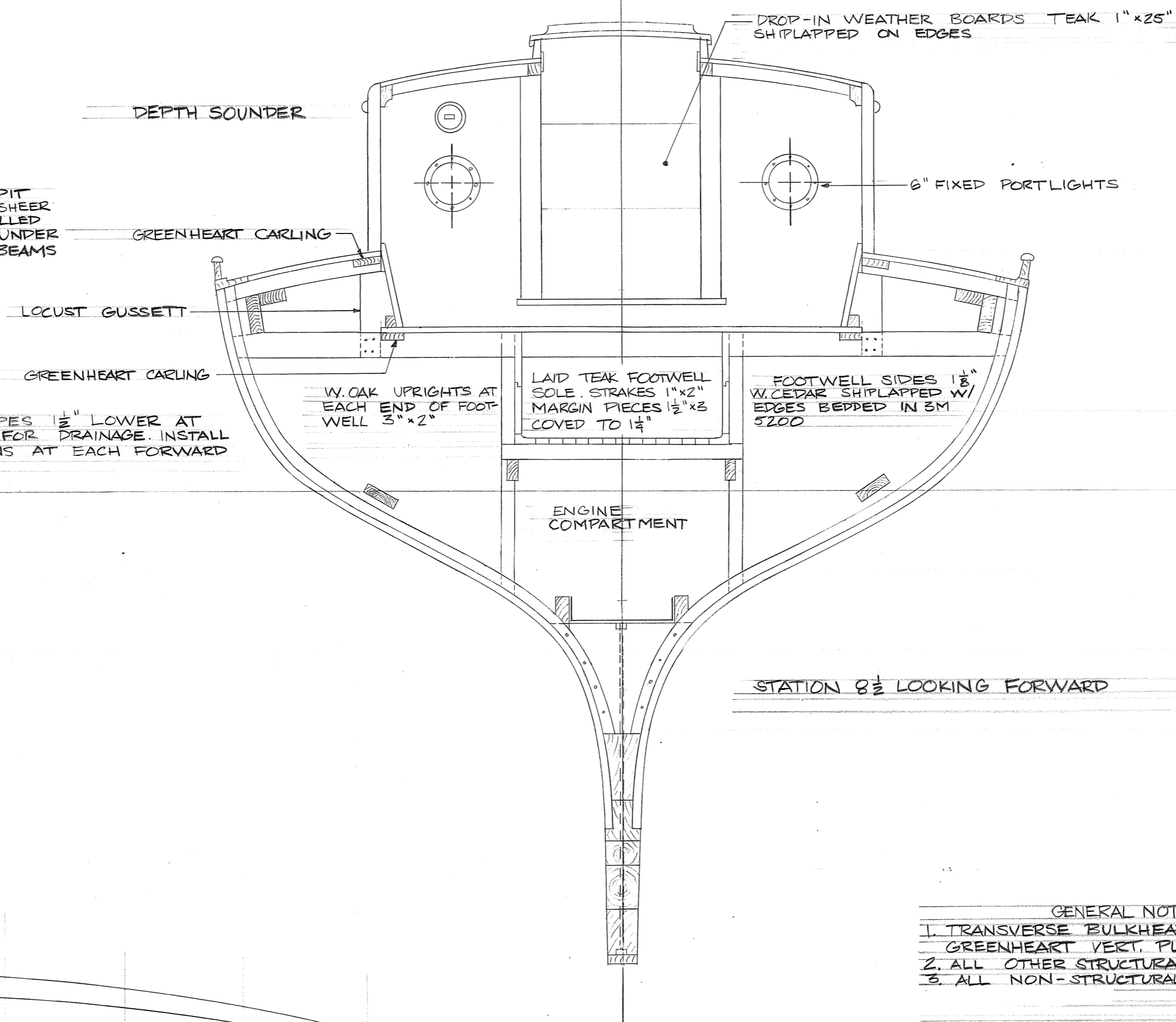


STATION 5 LOOKING FORWARD

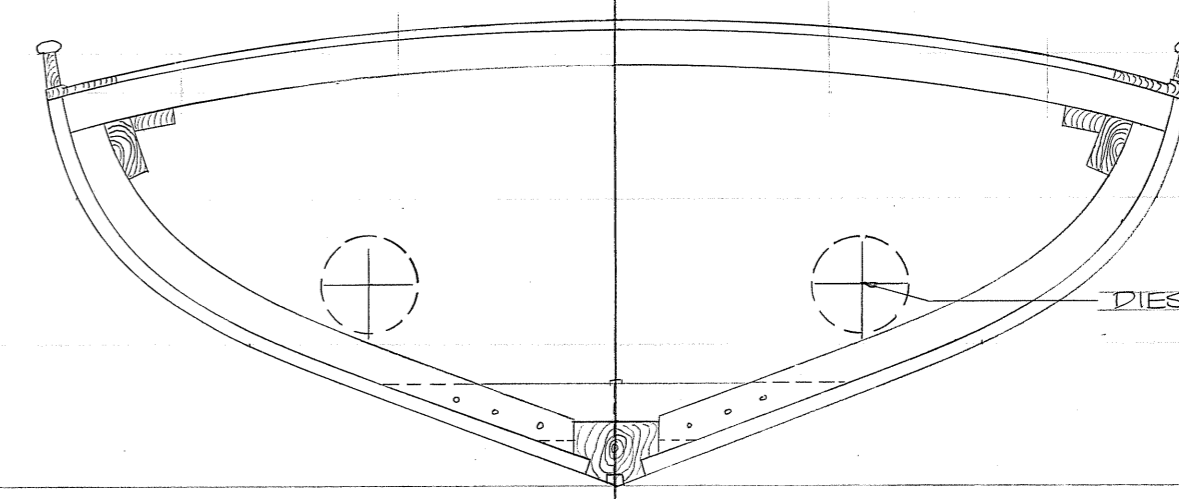
DWL



STATION 8 LOOKING AFT

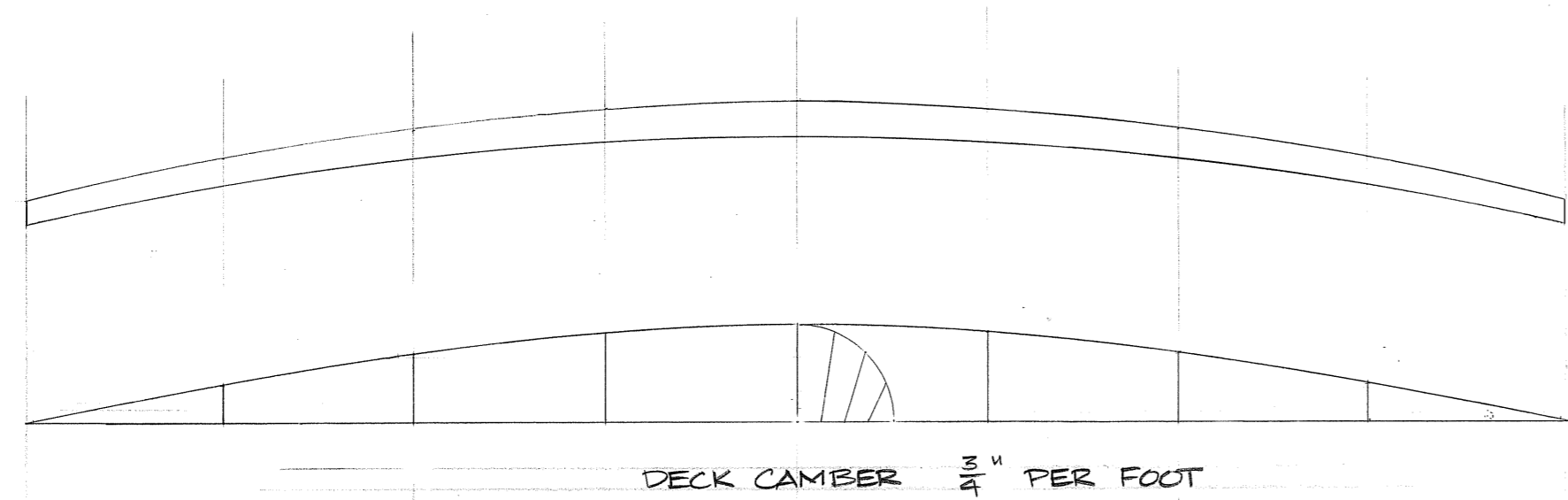


STATION 8 1/2 LOOKING FORWARD



STATION 10 LOOKING AFT

DWL

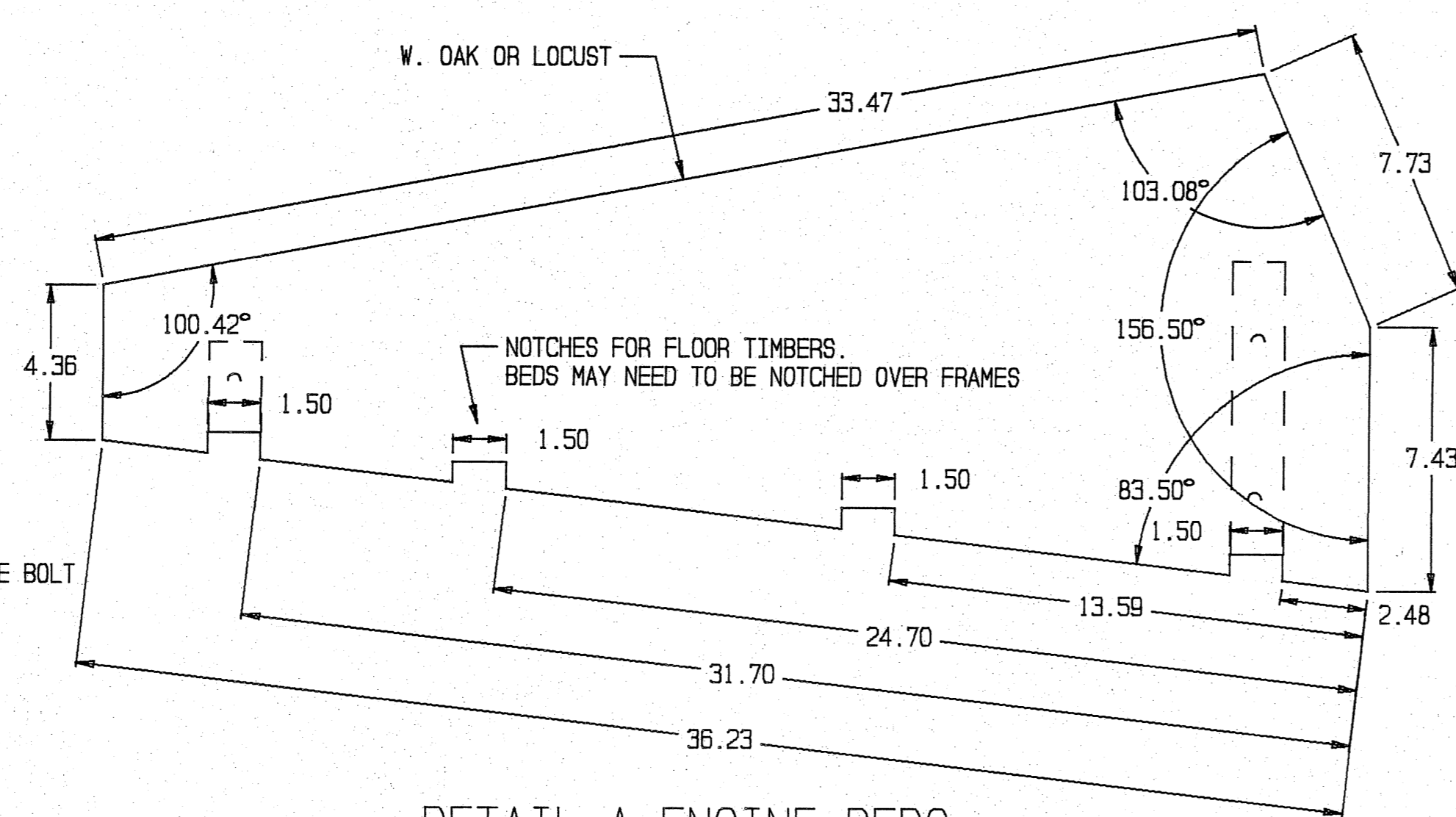
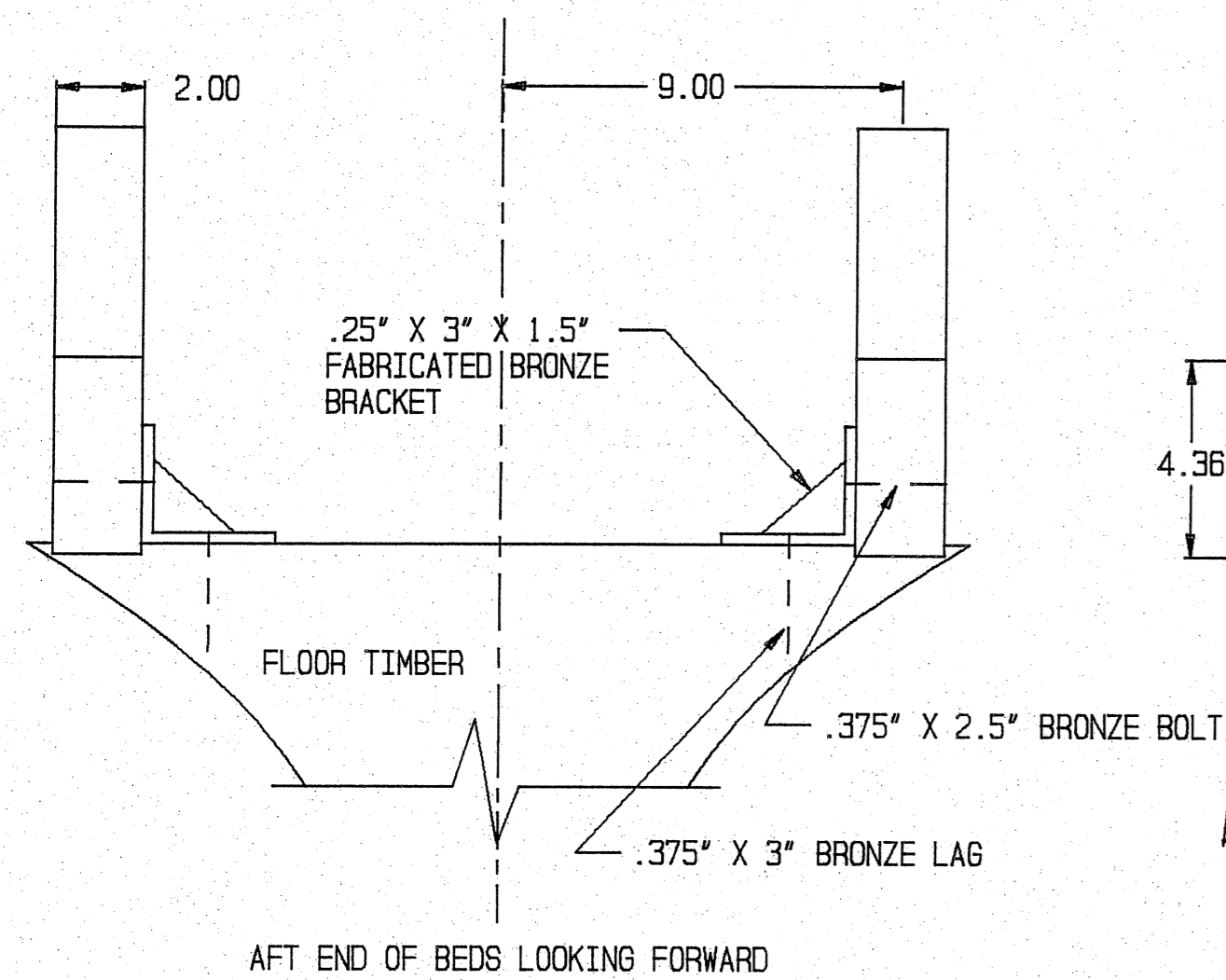


DECK CAMBER 3/8" PER FOOT

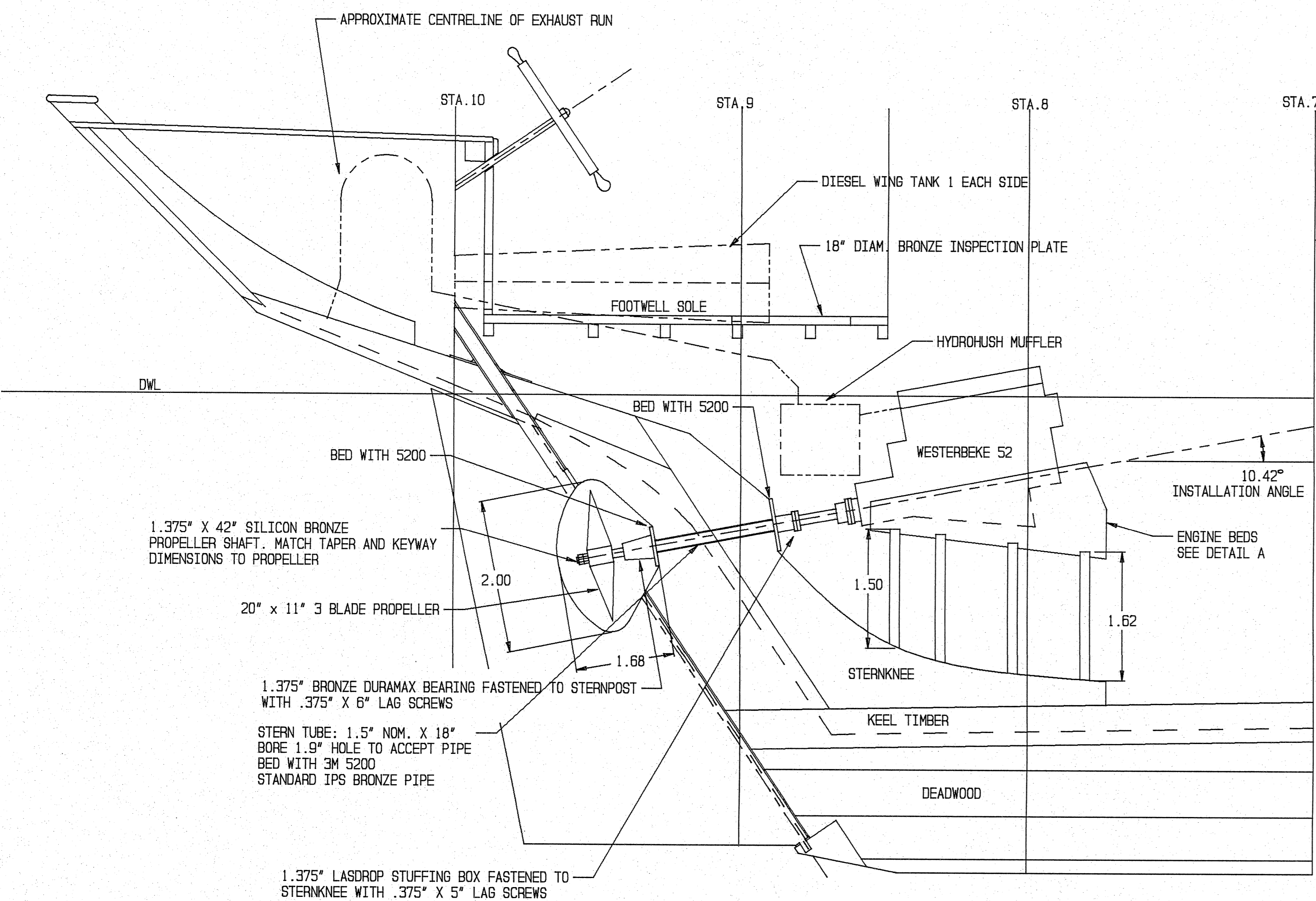
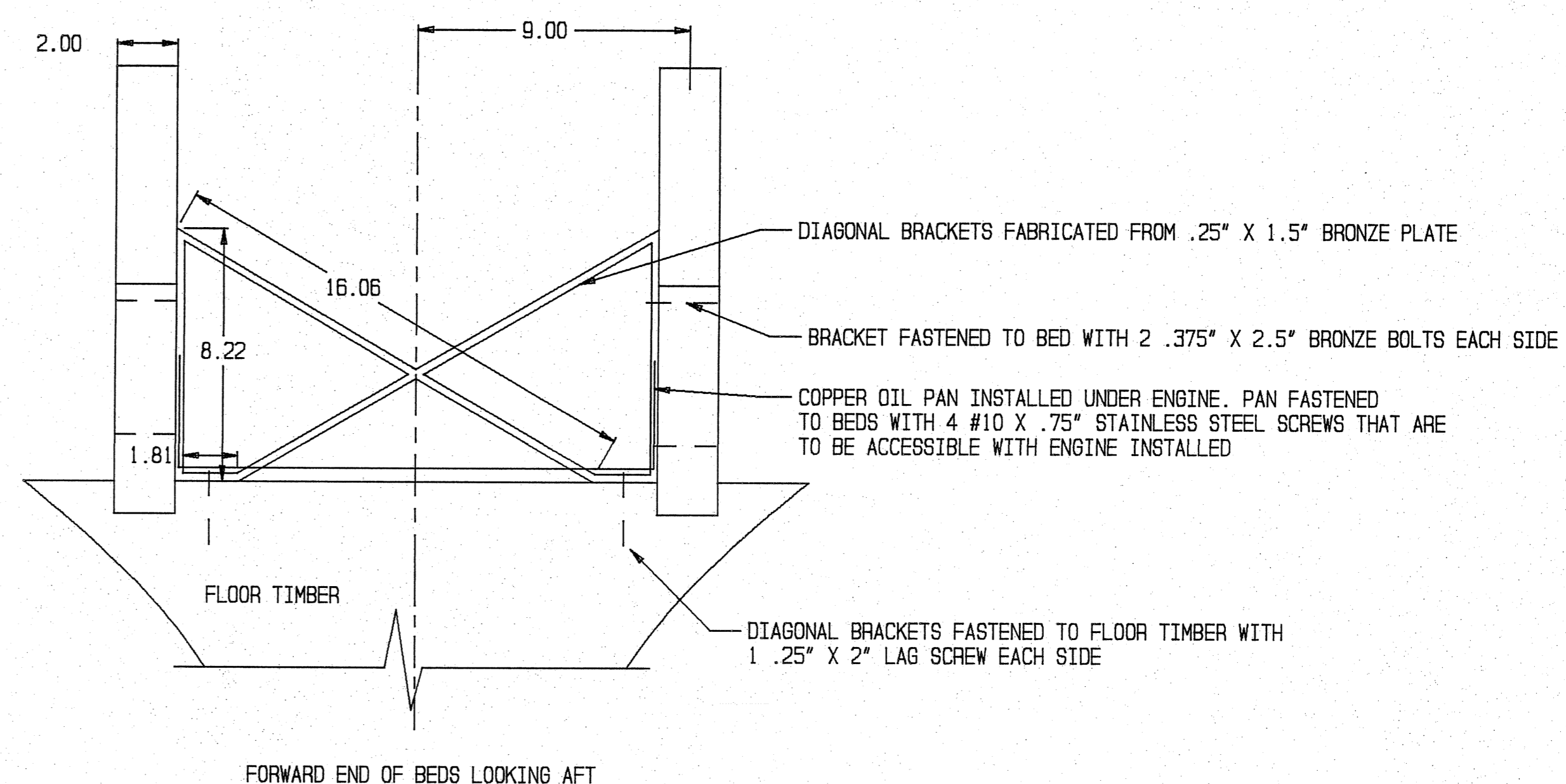
- GENERAL NOTES
1. TRANSVERSE BULKHEADS IN WAY OF MAST 3/4" T&G GREENHEART VERT. PLANKED
 2. ALL OTHER STRUCTURAL BULKHEADS 3/4" MOHAGANY (HOND.)
 3. ALL NON-STRUCTURAL " 3/4" CYPRESS

CONSTRUCTION SECTIONS

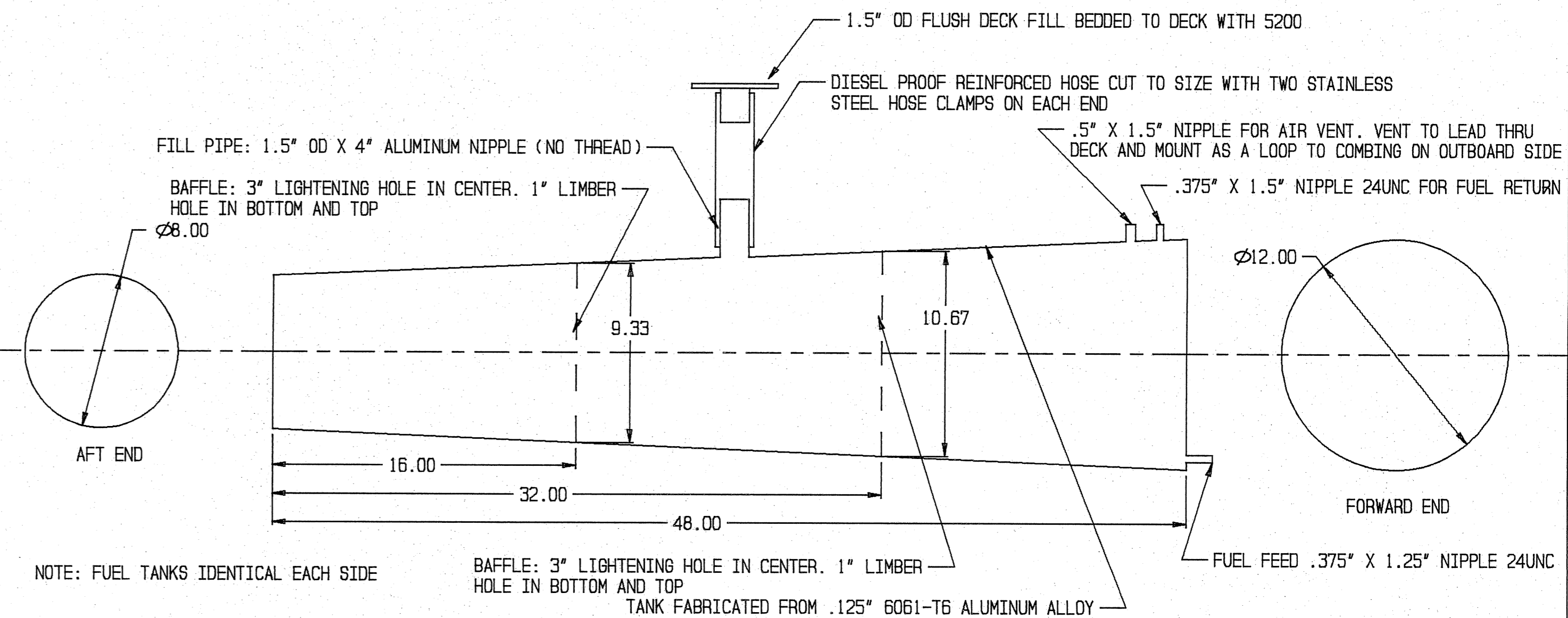
45' AUXILIARY SLOOP FOR "ELEDA"
 ROSS GANNON
 WEST TIBURY MA
 DESIGNED BY ANTONIO SALGUERO
 CASTINE ME
 SCALE: 3/8" = 1.0' APRIL 18, 1992
 SHEET NO. 4



DETAIL A ENGINE BEDS
SCALE: .25"=1.0"



ENGINE INSTALLATION PROFILE
SCALE: 1"=1.0'



16.5 U.S. GAL. DIESEL WING TANK
SCALE: .1875"=1.0"

NO	DESCRIPTION	DATE	BY
1	INITIAL ISSUE	4/4/92	ACS
REVISIONS			

- GENERAL NOTES:
- ALL DIMENSIONS IN INCHES. FEET AND DECIMALS OF BOTH
 - ENGINE TO BE INSTALLED TO MANUFACTURER'S SPECIFICATIONS
 - WET EXHAUST SYSTEM TO BE INSTALLED: HYDROHUSH MUFFLER, WITH EXHAUST LEADING OUT THROUGH COUNTER WITH THROUGH-HULL LOOP IN EXHAUST IN LAZARETTE
 - RAW WATER INTAKE TO HAVE IN-LINE STRAINER AS WELL AS A STRAINER OVER THROUGH-HULL INTAKE.
 - ENGINE TO HAVE ADEQUATE VENTILATION BY MEANS OF 3 2" SCREENED HOLES IN FORWARD FACE OF ENGINE BOX.
 - SACRIFICIAL ZINC ANODES TO BE INSTALLED ON PROPELLER SHAFT AND STERNPOST FOR STERN BEARING
 - TWO RACOR FUEL FILTERS TO BE INSTALLED IN PARALLEL AND TO BE SAFELY SERVICEABLE WHILE ENGINE IS RUNNING

ENGINE INSTALLATION DETAILS

45' AUXILIARY SLOOP "ELEDA"
FOR
ROSS GANNON
WEST TISBURY, MA
DESIGNED BY ANTONIO SALGUERO
CASTINE, ME
SCALE: AS NOTED APRIL 4, 1992
SHEET NO. 11

RUDDER CONSTRUCTION AND INSTALLATION DETAILS

45' AUXILIARY SLOOP "ELEDA"

FOR
ROSS GANNON
WEST TISBURY, MA

DESIGNED BY ANTONIO SALGUERO
CASTINE, ME

SCALE: AS NOTED APRIL 4, 1992
SHEET NO. 10

NO	DESCRIPTION	DATE	BY
1	INITIAL ISSUE	4/4/92	ACS
REVISIONS			

DO NOT SCALE DRAWING

GENERAL NOTES:

1. ALL DIMENSIONS ARE IN INCHES AND DECIMALS OF INCHES
2. ALL STRAP FITTINGS CAST FROM HIGH STRENGTH MANGANESE BRONZE
3. ALL RIVETS CUT FROM SILICON BRONZE ROD AND THEN ANNEALED
4. ALL GUDGEONS IN STERNPOST ARE RABBETED FLUSH AND BEDDED WITH TAR
5. ALL STRAPS IN RUDDER ARE RABBETED FLUSH AND BEDDED WITH TAR
6. ALL RIVET HEADS COUNTERSUNK .25"

